

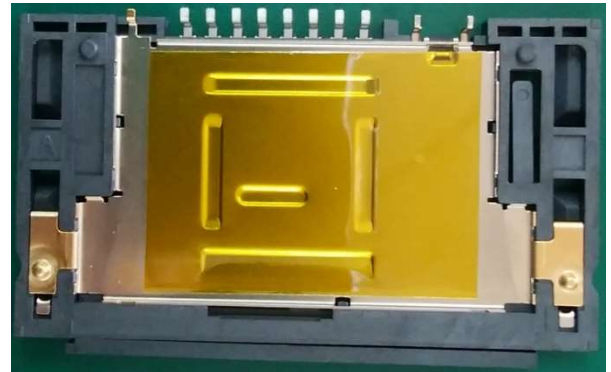
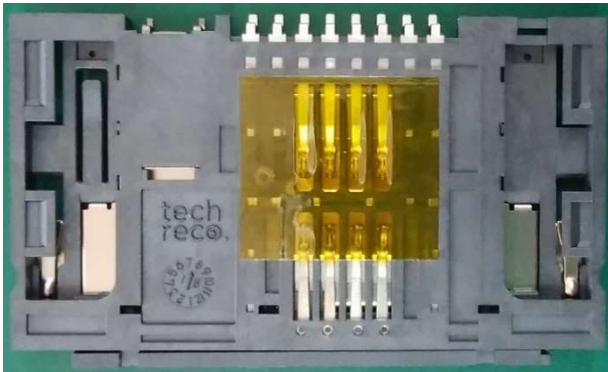
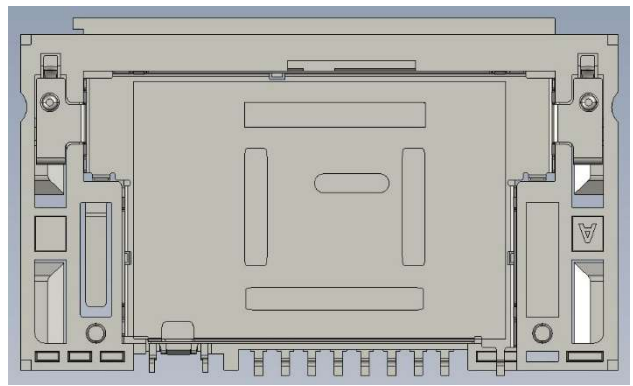
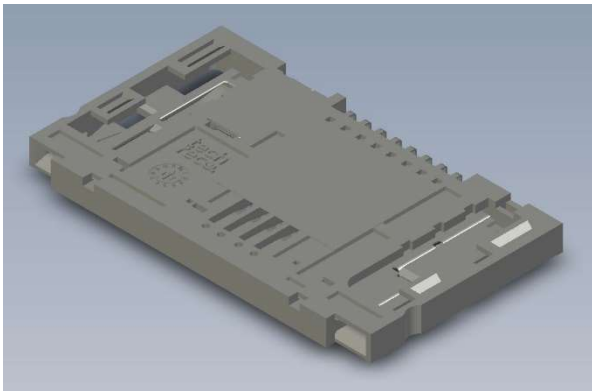
Smart Card Reader_ TCN-S001

FEATURES

Outline Dimension: L57.00mm x W32.00mm x H4.20mm

Life: 500,000 Cycles

Anti-ESD: Durable for 18KV



<General Information>

Contact Principle: Friction Technology

Mounting Type: SMT

Switch: Normal Open with Sealed End Switch

Durability: 500,000 cycles (Insert & Withdraw) at 600 cycles per hours (In a clean office room)

Anti-ESD: $\pm 18KV$ No impact on function

<Material>

Contacts: Copper Alloy, Gold flash over Pd 0.8um over Ni on contact area Sn plated on terminal area

Insulator: Thermoplastic, UL94V-0

Switch: Copper Alloy, Ag plated

Shielding Can: SUS304, Gold Flash on bosses for reflow of PCB

<Electrical Specification>

☆Contacts
 Contact Resistance: 200mΩ Max.
 Insulator Resistance: 1000MΩ Min
 Dielectric Withstanding Voltage:
 1000V DC Min.
 Rating Voltage: 30V AC
 Current Rating: 1A Max. 10uA Min.
 ☆Sealed End Switch
 Switching Voltage: 30V AC Max.
 Switching Current: 1mA Min. 300mA Max.
 Switching Load: 1VA Max.
 Contact Resistance: 400mΩ Max.
 Insulation Resistance: 100MΩ Min

<Mechanical Specification>

Card Insertion Force: 4N Max.
 Card Withdrawal Force: 1N Min.
 Contact Force: 0.2N ~ 0.6N per pin
 Contact Retention Force: 0.3kgf Min.

<Environmental Specification>

Operating Temp.: -40°C ~ +70°C
 Operating Humid.: 10% ~ 100% RH
 Solderability: Reflow Soldering 260°C10 Sec. Max.
 Storage Temp.: -40°C ~ +85°C
 Air Pressure: 70kPa ~ 106kPa

ISO 7816-2
 RoHS Compliance

<Outline Drawing>

